

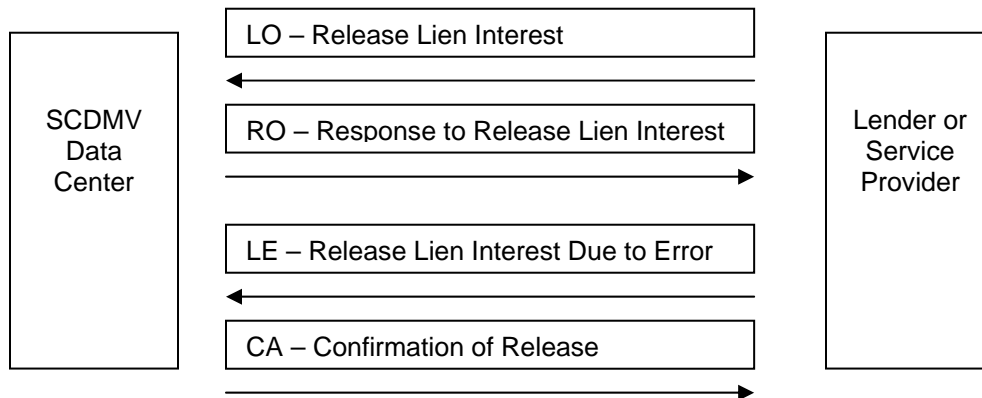
Release of lien and Release of lien due to errors:

Message Data Blocks and Required Data Elements

The Release Lien transaction (LO) is created by the lienholder and sent to DMV when the lien is satisfied and the lienholder no longer has an interest in the vehicle. DMV responds with the Release Lien Confirmation message.

Release Lien due to error transaction is posted to DMV as an error message. The lien is not released automatically by this transaction. This is to insure the owner will not be able to get a printed "clear title" while the error is being cleared up. DMV and the lienholder will manually resolve the errors and update the database as needed.

If DMV detects an error in the data contained in the LE or LO message, the 99/2/ Edit/Error Description block is added to the LE message and the message is returned to the lienholder. Otherwise, the DMV will return a conformation (RO for the LO, CA for the LE message).



Data Blocks and Required Data Elements

Network Control	Block 00/0	
TRAN-CODE	PIC X(04).	LO/LE: (Not used)
MSG-LENGTH	PIC 9(04).	LO/LE: MSG length
MSG-DESTINATION	PIC X(07).	LO/LE: (Not used)
MSG-ORIGIN	PIC X(07).	LO/LE: AAMVA mailbox of Lender
MSG-DATE	PIC X(06).	LO/LE: Current date
MSG-TIME	PIC X(06).	LO/LE: Current time
MSG-SEQUENCE-ID	PIC 9(04).	LO/LE: "0000" (incremented if more than 1 tx / sec)

APPL-ID	PIC X(02).	LO/LE: (Not used)
MSG-TYPE	PIC X(02).	LO/LE: "LO"
SEG-SEQUENCE-NO	PIC 9(02).	LO/LE: (Not used)
LAST-SEG-IND	PIC X(01).	LO/LE: (Not used)
TEXT-BLOCKS-COUNT	PIC 9(02).	LO/LE: Number of blocks
NETWORK-SESSION-IND	PIC X(01).	LO/LE: (Not used)
TEST-PROD-IND	PIC X(01).	LO/LE: (Not used)
TRANSMIT-MODE	PIC X(01).	LO/LE: (Not used)
ERROR-CODE	PIC X(01).	LO/LE: (Not used)
TRANS-ORIGINATOR	PIC X(07).	LO/LE: (Not used)
NETWORK-STATUS	PIC X(02).	LO/LE: (Not used)
APPL-STATUS	PIC X(01).	LO/LE: (Not used)
FILLER	PIC X(05).	
MESSAGE-EXCHANGE-CONTROL.	BLOCK (02/3)	
BLOCK-TYPE	PIC X(02).	LO/LE: "02"
BLOCK-SUBTYPE	PIC X(01).	LO/LE: "3"
BLOCK-LINENUM	PIC 9(02).	LO/LE: "01"
MSG-LOCATOR-HEADER	PIC X(26).	LO/LE: ELT_TRANSACTION_SEQ_NO & Title no
PROC-STATUS	PIC X(02).	LO/LE: (Not used)
MSG-MATCH-CNT	PIC X(02).	LO/LE: (Not used)
MSG-MATCH-IND	PIC X(01).	LO/LE: (Not used)
MATCH-LIMIT-EXCEEDED	PIC X(01).	LO/LE: (Not used)
MSG-MATCH-SEQUENCE-ID	PIC X(02).	LO/LE: (Not used)
JURISDICTION-CODE	PIC X(02).	LO/LE: (Not used)
CHNG-STATE-TITLE	PIC X(01).	LO/LE: (Not used)
CLEARI-TRANS-IND	NG PIC X(01).	LO/LE: (Not used)
RDF-IND	PIC X(01).	LO/LE: (Not used)
ACCEPTANCE-IND	PIC X(01).	LO/LE: (Not used)
FILLER	PIC X(02).	LO/LE: (Not used)
BATCH-NO	PIC X(15).	LO/LE: (Not used)
SW-VERSION-MODE	PIC X(01).	LO/LE: (Not used)
FILLER	PIC X(01).	LO/LE: (Not used)
EXPECT-MSG-ADJUSTMENT	PIC X(02).	LO/LE: (Not used)
VEHICLE-INFO	BLOCK (06/2).	
BLOCK-TYPE	PIC X(02).	LO/LE: "06"
BLOCK-SUBTYPE	PIC X(01).	LO/LE: "2"
BLOCK-LINENUM	PIC 9(02).	LO/LE: "01"
VIN	PIC X(30).	LO/LE: VIN of vehicle for loan
JURISDICTION	PIC X(02).	LO/LE: Spaces unless VIN assigned by SC
MAKE	PIC X(04).	LO/LE: Vehicle make
MODEL-YEAR	PIC X(04).	LO/LE: Vehicle year
CHG-REASON	PIC X(02).	LO/LE: (Not used)
VEHICLE-STATUS	PIC X(02).	LO/LE: (Not used)
VEHICLE-STATUS-DATE	PIC X(08).	LO/LE: (Not used)
VEHICLE-TYPE	PIC X(02).	LO/LE: (Not used)
VEHICLE-LENGTH	PIC X(06).	LO/LE: (Not used)
FILLER	PIC X(01).	LO/LE: (Not used)

TITLE IDENTIFICATION DATA BLOCK	BLOCK (26/2)	IGNORED FOR LO/LE
BLOCK-TYPE	PIC X(02).	LO/LE: "26"
BLOCK-SUBTYPE	PIC X(01).	LO/LE: "2"
BLOCK-LINENUM	PIC 9(02).	LO/LE: "01"
TITLE-NO	PIC X(17).	
TITLE-ISSUE-DATE	PIC X(08).	
TITLE-TYPE	PIC X(01).	
TITLING-JURIS	PIC X(02).	
TRANS-REASON	PIC X(02).	
TRANS-DATE	PIC X(08).	
TITLE-STATUS	PIC X(02).	
STATUS-DATE	PIC X(08).	
TITLE-LIEN-INDICATOR	PIC X(01).	
TITLE-FROM-MCO	PIC X(01).	
JURIS-TRANS-TITLE	PIC X(01).	
TITLE-HELD-REASON	PIC X(02).	
TITLE-HELD-JURIS	PIC X(02).	
TITLE-OWNER-RELATION	PIC X(03).	
FILLER	PIC X(03).	
REGISTRATION DATA BLOCK	BLOCK (29/1).	IGNORED FOR LO & LE
BLOCK-TYPE	PIC X(02).	
BLOCK-SUBTYPE	PIC X(01).	
BLOCK-LINENUM	PIC 9(02).	
BLOCK-DATA	PIC X(61).	
LIEN-DATA	BLOCK (30/1).	
BLOCK-TYPE	PIC X(02).	LO/LE: "30"
BLOCK-SUBTYPE	PIC X(01).	LO/LE: "1"
BLOCK-LINENUM	PIC 9(02).	LO/LE: "01"
BLOCK-DATA	PIC X(61).	LO/LE: 2 blocks 122 bytes defined below:
LIENHOLDER OCCURS 2 TIMES		
LIENHOLDER-ID	PIC X(16).	LO/LE: DMV assigned lienholder ID
LIEN-AMOUNT	PIC X(06).	LO/LE: (Not used)
LIEN-DATE	PIC X(08).	LO/LE: Lien date as record by DMV
LIEN-TIME	PIC X(06).	LO/LE: (Not used)
LIEN-FEIN	PIC X(09).	LO/LE: (Not used)
LIEN-EIN-SUFFIX	PIC X(02).	LO/LE: (Not used)
CHANGE-REASON	PIC X(02).	LO/LE: (Not used)
LIEN-RELEASE-DATE	PIC X(08).	LO: Date lien is satisfied.
LIEN-RELEASE-REASON	PIC X(02).	LO/LE: (Not used)
PAPER-REQ-REASON	PIC X(02).	LO/LE: (Not used)
LIENHOLDER-TYPE	OCCURS 2 TIMES PIC X(01).	LO/LE: (Not used)
FILLER	PIC X(12)	LO/LE: (Not used)
LIENHOLDER-NAME	BLOCK (30/2).	IGNORED FOR LO/LE

BLOCK-TYPE	PIC X(02).	LO/LE: "30"
BLOCK-SUBTYPE	PIC X(01).	LO/LE: "2"
BLOCK-LINENUM	PIC 9(02).	LO/LE: "01"
BLOCK-DATA	PIC X(61).	
LIENHOLDER OCCURS 2 TIMES		
LIENHOLDER-NAME	PIC X(35).	
CHANGE-REASON	PIC X(02).	
LIENHOLDER-ID	PIC X(16).	
FILLER	PIC X(34).	
DEALER-NAME	BLOCK (35/1).	OPTIONAL FOR LO, used for a "mail-to" address only. IGNORED ON LE.
BLOCK-TYPE	PIC X(02).	LO: "35"
BLOCK-SUBTYPE	PIC X(01).	LO: "1"
BLOCK-LINENUM	PIC 9(02).	LO: "01"
BLOCK-DATA	PIC X(61).	LO: up to 7 blocks 427 bytes defined below:
DEALER-NAME	PIC X(35).	Name of entity receiving title by mail.
DEALER-CODE	PIC X(10).	LO: (Not used).
DEALER-EIN-FID	PIC X(09).	LO: (Not used)
SHIPPING-COMPANY	PIC X(01).	LO: (Not used)
DEALER-NUMBER	PIC X(05).	LO: (Not used)
FILLER	PIC X(01).	LO: (Not used)
DEALER-ADDRESS	BLOCK (35/2).	OPTIONAL FOR LO, used for a "mail-to" address only. IGNORED ON LE.
BLOCK-TYPE	PIC X(02).	LO: "35"
BLOCK-SUBTYPE	PIC X(01).	LO: "2"
BLOCK-LINENUM	PIC 9(02).	LO: "01"
BLOCK-DATA	PIC X(61).	LO: up to 2 blocks 122 bytes defined below:
ADDRESS-LINE	PIC X(108).	LO: address AAMVA format (separated by @)
FILLER	PIC X(14)	LO: Spaces
ERROR DESCRIPTION BLOCK.	BLOCK (99/2)	Added for replies if errors found.
BLOCK-TYPE	PIC X(02).	RC: "99"
BLOCK-SUBTYPE	PIC X(01).	RC: "2"
BLOCK-LINENUM	PIC 9(02).	RC: "01"
BLOCK-AAMVA.		
ELEM-AAMVA-CODE	PIC X(06).	RC: AAMVE Element code
AAMVA-TYPE	PIC X(01).	RC: AAMVA Error type
FATAL-IND REDEFINES		
AAMVA-TYPE	PIC X(01).	
DATA-OCCUR	PIC X(02).	
MESSAGE-TEXT	PIC X(52).	RC: Error message free form
UNI-BLOCK REDEFINES		
BLOCK-AAMVA		
UNI-CODE	PIC X(04).	

UNI-IND	PIC X(01).	
UNI-CODE-LAST-2	PIC X(02).	
UNI-MESSAGE-TEXT	PIC X(54).	
ERROR-BLOCK.		
SEGMENT REDEFINES		
SEGMENT		
BLOCK-TYPE	PIC X(02).	
BLOCK-SUBTYPE	PIC X(01).	
BLOCK-LINENUM	PIC 9(02).	
ELEMENT-NUMBER	PIC X(06).	
ERROR-TYPE	PIC X(01).	
DATA-OCCURRENCE	PIC X(02).	
MESSAGE-TEXT	PIC X(52).	

Response to Release Lien

If there is an error, the complete LO or LE message (above) with an error segment added will be returned. There will be no response (CA) reply.

If the lien release was successful, the reply to Lien Release will be the reply (RO or CA) message below:

Network Control	Block 00/0	Segment updated as follows.
TRAN-CODE	PIC X(04).	(Not used)
MSG-LENGTH	PIC 9(04).	MSG length (132)
MSG-DESTINATION	PIC X(07).	AAMVA mailbox of Lender
MSG-ORIGIN	PIC X(07).	AAMVA mailbox of SCDMV
MSG-DATE	PIC X(06).	Processing date
MSG-TIME	PIC X(06).	Processing time
MSG-SEQUENCE-ID	PIC 9(04).	(No change)
APPL-ID	PIC X(02).	(No change)
MSG-TYPE	PIC X(02).	"RO" for reply to release lien "CA" for reply to release due to errors
SEG-SEQUENCE-NO	PIC 9(02).	(No change)
LAST-SEG-IND	PIC X(01).	(No change)
TEXT-BLOCKS-COUNT	PIC 9(02).	Number of segments (1). except the NCB.
NETWORK-SESSION-IND	PIC X(01).	(No change)
TEST-PROD-IND	PIC X(01).	(No change)
TRANSMIT-MODE	PIC X(01).	(No change)
ERROR-CODE	PIC X(01).	(No change)
TRANS-ORIGINATOR	PIC X(07).	(No change)
NETWORK-STATUS	PIC X(02).	(No change)
APPL-STATUS	PIC X(01).	(No change)
FILLER	PIC X(05).	(No change)
MESSAGE-EXCHANGE-CONTROL.	BLOCK (02/3)	No changes on the reply