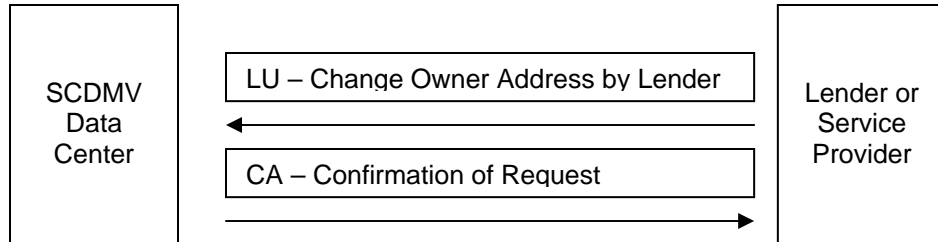


Change Owner address by lienholder

Message Data Blocks and Required Data Elements

A message (LU) sent by the lienholder notifying DMV of an owner's change address. If an error is detected, the 99/2 Edit/Error description block is added to the LU message and the message is returned to the lienholder.



Data Blocks and Required Data Elements

Network Control	Block 00/0	
TRAN-CODE	PIC X(04).	(Not used)
MSG-LENGTH	PIC 9(04).	MSG length
MSG-DESTINATION	PIC X(07).	(Not used)
MSG-ORIGIN	PIC X(07).	AAMVA mailbox of Lender
MSG-DATE	PIC X(06).	Current date
MSG-TIME	PIC X(06).	Current time
MSG-SEQUENCE-ID	PIC 9(04).	"0000" (incremented if more than 1 tx / sec)
APPL-ID	PIC X(02).	(Not used)
MSG-TYPE	PIC X(02).	"LU"
SEG-SEQUENCE-NO	PIC 9(02).	(Not used)
LAST-SEG-IND	PIC X(01).	(Not used)
TEXT-BLOCKS-COUNT	PIC 9(02).	Number of blocks
NETWORK-SESSION-IND	PIC X(01).	(Not used)
TEST-PROD-IND	PIC X(01).	(Not used)
TRANSMIT-MODE	PIC X(01).	(Not used)
ERROR-CODE	PIC X(01).	(Not used)
TRANS-ORIGINATOR	PIC X(07).	(Not used)
NETWORK-STATUS	PIC X(02).	(Not used)
APPL-STATUS	PIC X(01).	(Not used)
FILLER	PIC X(05).	
MESSAGE-EXCHANGE-CONTROL.	BLOCK (02/3)	
BLOCK-TYPE	PIC X(02).	"02"
BLOCK-SUBTYPE	PIC X(01).	"3"
BLOCK-LINENUM	PIC 9(02).	"01"
MSG-LOCATOR-HEADER	PIC X(26).	ELT_TRANSACTION_SEQ_NO & Title no
PROC-STATUS	PIC X(02).	(Not used)
MSG-MATCH-CNT	PIC X(02).	(Not used)
MSG-MATCH-IND	PIC X(01).	(Not used)

MATCH-LIMIT-EXCEEDED	PIC X(01).	(Not used)
MSG-MATCH-SEQUENCE-ID	PIC X(02).	(Not used)
JURISDICTION-CODE	PIC X(02).	(Not used)
CHNG-STATE-TITLE	PIC X(01).	(Not used)
CLEARI-TRANS-IND	NG PIC X(01).	(Not used)
RDF-IND	PIC X(01).	(Not used)
ACCEPTANCE-IND	PIC X(01).	(Not used)
FILLER	PIC X(02).	(Not used)
BATCH-NO	PIC X(15).	(Not used)
SW-VERSION-MODE	PIC X(01).	(Not used)
FILLER	PIC X(01).	(Not used)
EXPECT-MSG-ADJUSTMENT	PIC X(02).	(Not used)
VEHICLE-INFO	BLOCK (06/2).	
BLOCK-TYPE	PIC X(02).	"06"
BLOCK-SUBTYPE	PIC X(01).	"2"
BLOCK-LINENUM	PIC 9(02).	"01"
VIN	PIC X(30).	VIN of vehicle for loan
JURISDICTION	PIC X(02).	Spaces unless VIN assigned by SC
MAKE	PIC X(04).	Vehicle make
MODEL-YEAR	PIC X(04).	Vehicle year
CHG-REASON	PIC X(02).	(Not used)
VEHICLE-STATUS	PIC X(02).	(Not used)
VEHICLE-STATUS-DATE	PIC X(08).	(Not used)
VEHICLE-TYPE	PIC X(02).	(Not used)
VEHICLE-LENGTH	PIC X(06).	(Not used)
FILLER	PIC X(01).	(Not used)
LIEN-DATA	BLOCK (30/1).	
BLOCK-TYPE	PIC X(02).	"30"
BLOCK-SUBTYPE	PIC X(01).	"1"
BLOCK-LINENUM	PIC 9(02).	"01"
BLOCK-DATA	PIC X(61).	2 blocks 122 bytes defined below:
LIENHOLDER OCCURS 2 TIMES		
LIENHOLDER-ID	PIC X(16).	DMV assigned lienholder ID
LIEN-AMOUNT	PIC X(06).	(Not used)
LIEN-DATE	PIC X(08).	Lien date as record by DMV
LIEN-TIME	PIC X(06).	(Not used)
LIEN-FEIN	PIC X(09).	(Not used)
LIEN-EIN-SUFFIX	PIC X(02).	(Not used)
CHANGE-REASON	PIC X(02).	(Not used)
LIEN-RELEASE-DATE	PIC X(08).	(Not used)
LIEN-RELEASE-REASON	PIC X(02).	(Not used)
PAPER-REQ-REASON	PIC X(02).	(Not used)
LIENHOLDER-TYPE	OCCURS 2 TIMES PIC X(01).	(Not used)
FILLER	PIC X(12)	(Not used)
OWNER-NAME	BLOCK (34/1).	

BLOCK-TYPE	PIC X(02).	"34"
BLOCK-SUBTYPE	PIC X(01).	"1"
BLOCK-LINENUM	PIC 9(02).	"01"
BLOCK-DATA	PIC X(61).	Up to 7 blocks 427 bytes defined below:
CHANGE-REASON	PIC X(02).	"02"
TRANSFER	PIC X(01).	"2"
OWNER OCCURS 7 TIMES.		
OWNER-NAME	PIC X(35).	Name to mail the title to
OWNER-DOB	PIC X(08).	(Not used)
OWNER-TYPE	PIC X(01).	(Not used)
OWNER-MILITARY	PIC X(01).	(Not used)
OWNER-EIB-FID	PIC X(09).	(Not used)
OWNER-ADDRESS	BLOCK (34/2).	
BLOCK-TYPE	PIC X(02).	"34"
BLOCK-SUBTYPE	PIC X(01).	"2"
BLOCK-LINENUM	PIC 9(02).	"01"
BLOCK-DATA	PIC X(61).	Up to 2 blocks 122 bytes defined below:
ADDRESS-LINE	PIC X(108).	Address AAMVA format (separated by @)
FILLER	PIC X(14)	Spaces
ERROR DESCRIPTION BLOCK.	BLOCK (99/2)	<i>Added for replies if errors found.</i>
BLOCK-TYPE	PIC X(02).	RC: "99"
BLOCK-SUBTYPE	PIC X(01).	RC: "2"
BLOCK-LINENUM	PIC 9(02).	RC: "01"
BLOCK-AAMVA.		
ELEM-AAMVA-CODE	PIC X(06).	RC: AAMVE Element code
AAMVA-TYPE	PIC X(01).	RC: AAMVA Error type
FATAL-IND REDEFINES		
AAMVA-TYPE	PIC X(01).	
DATA-OCCUR	PIC X(02).	
MESSAGE-TEXT	PIC X(52).	RC: Error message free form
UNI-BLOCK REDEFINES		
BLOCK-AAMVA		
UNI-CODE	PIC X(04).	
UNI-IND	PIC X(01).	
UNI-CODE-LAST-2	PIC X(02).	
UNI-MESSAGE-TEXT	PIC X(54).	
ERROR-BLOCK.		
SEGMENT REDEFINES		
SEGMENT		
BLOCK-TYPE	PIC X(02).	
BLOCK-SUBTYPE	PIC X(01).	
BLOCK-LINENUM	PIC 9(02).	
ELEMENT-NUMBER	PIC X(06).	
ERROR-TYPE	PIC X(01).	
DATA-OCCURRENCE	PIC X(02).	
MESSAGE-TEXT	PIC X(52).	

Response to Change Owner Address by Lienholder

If there is an error, the complete LU message (above) with an error segment added will be returned. There will be no response (CA) reply.

If the Change Owner Address is successful (the owner and lien information match our records), the reply will be the Reply (RO or CA) Message below. The owners address is not changed based on this transaction:

Network Control	Block 00/0	
TRAN-CODE	PIC X(04).	(Not used)
MSG-LENGTH	PIC 9(04).	MSG length (for a CA, 132).
MSG-DESTINATION	PIC X(07).	AAMVA mailbox of Lender
MSG-ORIGIN	PIC X(07).	AAMVA mailbox of SCDMV
MSG-DATE	PIC X(06).	Processing date
MSG-TIME	PIC X(06).	Processing time
MSG-SEQUENCE-ID	PIC 9(04).	(No change)
APPL-ID	PIC X(02).	(No change)
MSG-TYPE	PIC X(02).	"CA"
SEG-SEQUENCE-NO	PIC 9(02).	(No change)
LAST-SEG-IND	PIC X(01).	(No change)
TEXT-BLOCKS-COUNT	PIC 9(02).	Number of blocks excluding the NCB (1 for a CA reply).
NETWORK-SESSION-IND	PIC X(01).	(No change)
TEST-PROD-IND	PIC X(01).	(No change)
TRANSMIT-MODE	PIC X(01).	(No change)
ERROR-CODE	PIC X(01).	(No change)
TRANS-ORIGINATOR	PIC X(07).	(No change)
NETWORK-STATUS	PIC X(02).	(No change)
APPL-STATUS	PIC X(01).	(No change)
FILLER	PIC X(05).	(Not used)
MESSAGE-EXCHANGE-CONTROL.	BLOCK (02/3)	No changes on the reply