

The following is a list of required data elements for each transaction.

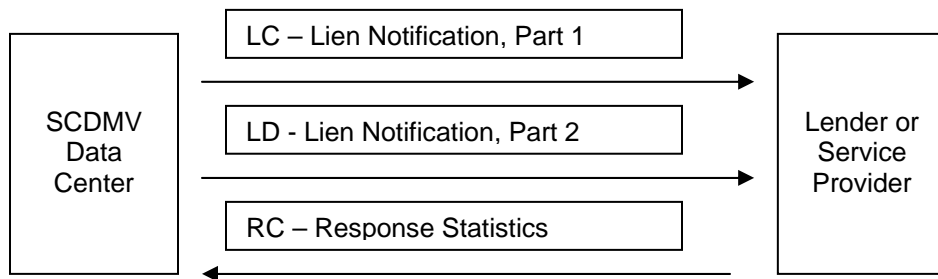
Lien Notification:

Message Data Blocks and Required Data Elements

The lien notification message (LC) is created by DMV as a result of the addition of a title record on the DMV database with an ELT lienholder's customer number. The messages will be grouped together and sent to the lienholder. It will have Part I and Part II as separate messages one after the other.

The lienholder responds by formatting and sending a Response to Lien Notification Message (RC) to DMV. The RC message contains a count of messages received, processed and in error. Part I and Part II are considered as one transaction for purposes of transactions and error replies.

If the lienholder detects an error in the data sent by DMV they need to add the 99/2 Edit/Error Description block to the LC message and return it to DMV.



Data Blocks and Required Data Elements - Part I

LC – Lien Notification		
Network Control	Block 00/0	
TRAN-CODE	PIC X(04).	Spaces
MSG-LENGTH	PIC 9(04).	Message length (0594 or more)
MSG-DESTINATION	PIC X(07).	AAMVA mailbox of lender
MSG-ORIGIN	PIC X(07).	SCDMV mailbox
MSG-DATE	PIC X(06).	Current date
MSG-TIME	PIC X(06).	Current time
MSG-SEQUENCE-ID	PIC 9(04).	"0000" (incremented if more than 1 tx / sec)
APPL-ID	PIC X(02).	"10"

MSG-TYPE	PIC X(02).	"LC"
SEG-SEQUENCE-NO	PIC 9(02).	"01"
LAST-SEG-IND	PIC X(01).	"Y"
TEXT-BLOCKS-COUNT	PIC 9(02).	Number of blocks (08 or more)
NETWORK-SESSION-IND	PIC X(01).	"N"
TEST-PROD-IND	PIC X(01).	T" *This should be changed to "P"
TRANSMIT-MODE	PIC X(01).	"3"
ERROR-CODE	PIC X(01).	"N"
TRANS-ORIGINATOR	PIC X(07).	"SCDMV"
NETWORK-STATUS	PIC X(02).	Spaces
APPL-STATUS	PIC X(01).	"0"
FILLER	PIC X(05).	
MESSAGE-EXCHANGE-CONTROL.	BLOCK (02/3)	
BLOCK-TYPE	PIC X(02).	"02"
BLOCK-SUBTYPE	PIC X(01).	"3"
BLOCK-LINENUM	PIC 9(02).	"01"
MSG-LOCATOR-HEADER	PIC X(26).	ELT_TRANSACTION_SEQ_NO & Title no
PROC-STATUS	PIC X(02).	Spaces
MSG-MATCH-CNT	PIC X(02).	"00"
MSG-MATCH-IND	PIC X(01).	Spaces
MATCH-LIMIT-EXCEEDED	PIC X(01).	Spaces
MSG-MATCH-SEQUENCE-ID	PIC X(02).	Spaces
JURISDICTION-CODE	PIC X(02).	"SC"
CHNG-STATE-TITLE	PIC X(01).	Spaces
CLEARI-TRANS-IND	NG PIC X(01).	Spaces
RDF-IND	PIC X(01).	Spaces
ACCEPTANCE-IND	PIC X(01).	Spaces
FILLER	PIC X(02).	Spaces
BATCH-NO	PIC X(15).	Incremented for each lender each day
SW-VERSION-MODE	PIC X(01).	Spaces
FILLER	PIC X(01).	Spaces
EXPECT-MSG-ADJUSTMENT	PIC X(02).	Spaces
VEHICLE-INFO	BLOCK (06/2).	
BLOCK-TYPE	PIC X(02).	"06"
BLOCK-SUBTYPE	PIC X(01).	"2"
BLOCK-LINENUM	PIC 9(02).	"01"
VIN	PIC X(30).	VIN of vehicle for loan
JURISDICTION	PIC X(02).	Spaces unless VIN assigned by SC
MAKE	PIC X(04).	Vehicle make
MODEL-YEAR	PIC X(04).	Vehicle year
CHG-REASON	PIC X(02).	Spaces
VEHICLE-STATUS	PIC X(02).	Spaces
VEHICLE-STATUS-DATE	PIC X(08).	Spaces
VEHICLE-TYPE	PIC X(02).	Assigned based on DMV body

		style
VEHICLE-LENGTH	PIC X(06).	"000000"
FILLER	PIC X(01).	Spaces
TITLE IDENTIFICATION DATA BLOCK	BLOCK (26/2)	
BLOCK-TYPE	PIC X(02).	"26"
BLOCK-SUBTYPE	PIC X(01).	"2"
BLOCK-LINENUM	PIC 9(02).	"01"
TITLE-NO	PIC X(17).	DMV title no
TITLE-ISSUE-DATE	PIC X(08).	DMV issue date
TITLE-TYPE	PIC X(01).	"1"
TITLING-JURIS	PIC X(02).	"SC"
TRANS-REASON	PIC X(02).	Spaces
TRANS-DATE	PIC X(08).	Spaces
TITLE-STATUS	PIC X(02).	"00"
STATUS-DATE	PIC X(08).	DMV issue date
TITLE-LIEN-INDICATOR	PIC X(01).	Spaces
TITLE-FROM-MCO	PIC X(01).	Spaces
JURIS-TRANS-TITLE	PIC X(01).	Spaces
TITLE-HELD-REASON	PIC X(02).	Spaces
TITLE-HELD-JURIS	PIC X(02).	Spaces
TITLE-OWNER-RELATION	PIC X(03).	"AND", "OR", etc (From TITLE_CUSTOMER
FILLER	PIC X(03).	Spaces
LIEN-DATA	BLOCK (30/1).	
BLOCK-TYPE	PIC X(02).	"30"
BLOCK-SUBTYPE	PIC X(01).	"1"
BLOCK-LINENUM	PIC 9(02).	"01"
BLOCK-DATA	PIC X(61).	2 blocks 122 bytes defined below:
LIENHOLDER OCCURS 2 TIMES		
LIENHOLDER-ID	PIC X(16).	DMV assigned lienholder ID
LIEN-AMOUNT	PIC X(06).	"000000"
LIEN-DATE	PIC X(08).	Lien date
LIEN-TIME	PIC X(06).	"000000"
LIEN-FEIN	PIC X(09).	"000000000"
LIEN-EIN-SUFFIX	PIC X(02).	Spaces
CHANGE-REASON	PIC X(02).	Spaces
LIEN-RELEASE-DATE	PIC X(08).	Spaces
LIEN-RELEASE-REASON	PIC X(02).	Spaces
PAPER-REQ-REASON	PIC X(02).	
LIENHOLDER-TYPE	OCCURS 2 TIMES PIC X(01).	Spaces
FILLER	PIC X(12)	
LIENHOLDER-NAME	BLOCK (30/2).	
BLOCK-TYPE	PIC X(02).	"30"
BLOCK-SUBTYPE	PIC X(01).	"2"
BLOCK-LINENUM	PIC 9(02).	"01"
BLOCK-DATA	PIC X(61).	2 blocks 122 bytes defined below:
LIENHOLDER OCCURS 2		

TIMES		
LIENHOLDER-NAME	PIC X(35).	Name of lienholder in customer database
CHANGE-REASON	PIC X(02).	Spaces
LIENHOLDER-ID	PIC X(16).	Spaces
FILLER	PIC X(34).	Spaces
LIENHOLDER-ADDRESS	BLOCK (30/8)	
BLOCK-TYPE	PIC X(02).	"30"
BLOCK-SUBTYPE	PIC X(01).	"8"
BLOCK-LINENUM	PIC 9(02).	"01" ("02" if 2nd block)
BLOCK-DATA	PIC X(61).	U to 2 blocks 122 bytes defined below:
ADDRESS-LINE	PIC X(108).	Address AAMVA format (separated by @)
FILLER	PIC X(14)	Spaces
LIENHOLDER-ADDRESS	BLOCK (30/9)	Used only if 2nd lienholder
BLOCK-TYPE	PIC X(02).	"30"
BLOCK-SUBTYPE	PIC X(01).	"9"
BLOCK-LINENUM	PIC 9(02).	"01" ("02" if 2nd block)
BLOCK-DATA	PIC X(61).	U to 2 blocks 122 bytes defined below:
ADDRESS-LINE	PIC X(108).	Address AAMVA format (separated by @)
FILLER	PIC X(14)	Spaces
OWNER-NAME	BLOCK (34/1).	
BLOCK-TYPE	PIC X(02).	"34"
BLOCK-SUBTYPE	PIC X(01).	"1"
BLOCK-LINENUM	PIC 9(02).	"01"
BLOCK-DATA	PIC X(61).	up to 7 blocks 427 bytes defined below:
CHANGE-REASON	PIC X(02).	"02"
TRANSFER	PIC X(01).	"2"
OWNER OCCURS 7 TIMES.		
OWNER-NAME	PIC X(35).	Owners name from DMV customer DB
OWNER-DOB	PIC X(08).	Owners DOB from customer DB
OWNER-TYPE	PIC X(01).	"1" Individual, "2" business
OWNER-MILITARY	PIC X(01).	Spaces
OWNER-EIB-FID	PIC X(09).	Spaces
OWNER-ADDRESS	BLOCK (34/2).	
BLOCK-TYPE	PIC X(02).	"34"
BLOCK-SUBTYPE	PIC X(01).	"3"
BLOCK-LINENUM	PIC 9(02).	"01"
BLOCK-DATA	PIC X(61).	Up to 2 blocks 122 bytes defined below:
ADDRESS-LINE	PIC X(108).	Address AAMVA format (separated by @)
FILLER	PIC X(14)	Spaces

Data Blocks and Required Data Elements - Part II

LD – Lien Notification		
Network Control	Block 00/0	
TRAN-CODE	PIC X(04).	Spaces
MSG-LENGTH	PIC 9(04).	Message length (0396 or more)
MSG-DESTINATION	PIC X(07).	AAMVA mailbox of lender
MSG-ORIGIN	PIC X(07).	SCDMV mailbox
MSG-DATE	PIC X(06).	Current date
MSG-TIME	PIC X(06).	Current time
MSG-SEQUENCE-ID	PIC 9(04).	"0000" (incremented if more than 1 tx / sec)
APPL-ID	PIC X(02).	"10"
MSG-TYPE	PIC X(02).	"LD"
SEG-SEQUENCE-NO	PIC 9(02).	"01"
LAST-SEG-IND	PIC X(01).	"Y"
TEXT-BLOCKS-COUNT	PIC 9(02).	Number of blocks (05 or more)
NETWORK-SESSION-IND	PIC X(01).	"N"
TEST-PROD-IND	PIC X(01).	T" *This should be changed to "P"
TRANSMIT-MODE	PIC X(01).	"3"
ERROR-CODE	PIC X(01).	"N"
TRANS-ORIGINATOR	PIC X(07).	"SCDMV"
NETWORK-STATUS	PIC X(02).	Spaces
APPL-STATUS	PIC X(01).	"0"
FILLER	PIC X(05).	
MESSAGE-EXCHANGE-CONTROL.	BLOCK (02/3)	
BLOCK-TYPE	PIC X(02).	"02"
BLOCK-SUBTYPE	PIC X(01).	"3"
BLOCK-LINENUM	PIC 9(02).	"01"
MSG-LOCATOR-HEADER	PIC X(26).	ELT_TRANSACTION_SEQ_NO & Title no
PROC-STATUS	PIC X(02).	Spaces
MSG-MATCH-CNT	PIC X(02).	"00"
MSG-MATCH-IND	PIC X(01).	Spaces
MATCH-LIMIT-EXCEEDED	PIC X(01).	Spaces
MSG-MATCH-SEQUENCE-ID	PIC X(02).	Spaces
JURISDICTION-CODE	PIC X(02).	"SC"
CHNG-STATE-TITLE	PIC X(01).	Spaces
CLEARI-TRANS-IND	NG PIC X(01).	Spaces
RDF-IND	PIC X(01).	Spaces
ACCEPTANCE-IND	PIC X(01).	Spaces
FILLER	PIC X(02).	Spaces
BATCH-NO	PIC X(15).	Incremented for each lender each day
SW-VERSION-MODE	PIC X(01).	Spaces
FILLER	PIC X(01).	Spaces
EXPECT-MSG-ADJUSTMENT	PIC X(02).	Spaces

VEHICLE-INFO	BLOCK (06/2).	
BLOCK-TYPE	PIC X(02).	"06"
BLOCK-SUBTYPE	PIC X(01).	"2"
BLOCK-LINENUM	PIC 9(02).	"01"
VIN	PIC X(30).	VIN of vehicle for loan
JURISDICTION	PIC X(02).	Spaces unless VIN assigned by SC
MAKE	PIC X(04).	Vehicle make
MODEL-YEAR	PIC X(04).	Vehicle year
CHG-REASON	PIC X(02).	Spaces
VEHICLE-STATUS	PIC X(02).	Spaces
VEHICLE-STATUS-DATE	PIC X(08).	Spaces
VEHICLE-TYPE	PIC X(02).	Assigned based on DMV body style
VEHICLE-LENGTH	PIC X(06).	"000000"
FILLER	PIC X(01).	Spaces
ODOMETER DATA BLOCK	BLOCK (26/4)	
BLOCK-TYPE	PIC X(02).	"26"
BLOCK-SUBTYPE	PIC X(01).	"4"
BLOCK-LINENUM	PIC 9(02).	"01"
ODOMETER-READING	PIC 9(09).	Mileage on vehicle
UNIT	PIC X(01).	Unit of measure
DATE	PIC X(08).	Date of reading
FILLER	PIC X(35).	
BRAND-DATA	BLOCK (26/6).	
	PIC X(02).	"26"
	PIC X(01).	"6"
	PIC 9(02).	"01"
	PIC X(61).	Up to 2 blocks 122 bytes defined below:
BRAND OCCURS 7 TIMES		
BRANDER_CODE	PIC X(13).	"SC"
BRAND-CODE	PIC X(02).	AAMVA brand codes
FILLER	PIC X(19).	
LIEN-DATA	BLOCK (30/1).	
BLOCK-TYPE	PIC X(02).	"30"
BLOCK-SUBTYPE	PIC X(01).	"1"
BLOCK-LINENUM	PIC 9(02).	"01"
BLOCK-DATA	PIC X(61).	2 blocks 122 bytes defined below:
LIENHOLDER OCCURS 2 TIMES		
LIENHOLDER-ID	PIC X(16).	DMV assigned lienholder ID
LIEN-AMOUNT	PIC X(06).	"000000"
LIEN-DATE	PIC X(08).	Lien date
LIEN-TIME	PIC X(06).	"000000"
LIEN-FEIN	PIC X(09).	"000000000"
LIEN-EIN-SUFFIX	PIC X(02).	Spaces
CHANGE-REASON	PIC X(02).	Spaces

LIEN-RELEASE-DATE	PIC X(08).	Spaces
LIEN-RELEASE-REASON	PIC X(02).	Spaces
PAPER-REQ-REASON	PIC X(02).	
LIENHOLDER-TYPE	OCCURS 2 TIMES PIC X(01).	Spaces
FILLER	PIC X(12)	
FILLER	PIC X(14)	Spaces

This error segment should be added to the Lien notification (Part 1 only) and that transaction with this error segment should be returned to the DMV for any LC/LD transaction which has errors.

This error block should be appended to any 'LC' message returned.		
ERROR DESCRIPTION BLOCK.	BLOCK (99/2)	
BLOCK-TYPE	PIC X(02).	RC: "99"
BLOCK-SUBTYPE	PIC X(01).	RC: "2"
BLOCK-LINENUM	PIC 9(02).	RC: "01"
BLOCK-AAMVA.		
ELEM-AAMVA-CODE	PIC X(06).	RC: AAMVA Element code
AAMVA-TYPE	PIC X(01).	RC: AAMVA Error type
FATAL-IND REDEFINES		
AAMVA-TYPE	PIC X(01).	
DATA-OCCUR	PIC X(02).	
MESSAGE-TEXT	PIC X(52).	RC: Error message free form
UNI-BLOCK REDEFINES		
BLOCK-AAMVA		
UNI-CODE	PIC X(04).	
UNI-IND	PIC X(01).	
UNI-CODE-LAST-2	PIC X(02).	
UNI-MESSAGE-TEXT	PIC X(54).	
ERROR-BLOCK.		
SEGMENT REDEFINES		
SEGMENT		
BLOCK-TYPE	PIC X(02).	
BLOCK-SUBTYPE	PIC X(01).	
BLOCK-LINENUM	PIC 9(02).	
ELEMENT-NUMBER	PIC X(06).	
ERROR-TYPE	PIC X(01).	
DATA-OCCURRENCE	PIC X(02).	
MESSAGE-TEXT	PIC X(52).	

Response to Lien Notification

If there are errors, the 99/2 segment shown above should be attached to each LC record with an error and the LC transaction should be returned. The number of LC transactions returned with errors in each batch should match the number of errors in the RC transaction below.

Message Data Blocks and Required Data Elements

The Response to Lien Notification (RC) message is formatted and sent by the lienholder for each batch based on the batch number in the LC message exchange segment after receiving a batch of Lien Notification messages.

Network Control	Block 00/0	
TRAN-CODE	PIC X(04).	LC: (Not used)
MSG-LENGTH	PIC 9(04).	LC/RC: MSG length
MSG-DESTINATION	PIC X(07).	LC: (Not used)
MSG-ORIGIN	PIC X(07).	LC/RC: AAMVA mailbox of Lender
MSG-DATE	PIC X(06).	LC/RC: Current date
MSG-TIME	PIC X(06).	LC/RC: Current time
MSG-SEQUENCE-ID	PIC 9(04).	LC/RC: "0000" (incremented if more than 1 tx / sec)
APPL-ID	PIC X(02).	LC: (Not used)
MSG-TYPE	PIC X(02).	LC/RC: "LE" or "RC"
SEG-SEQUENCE-NO	PIC 9(02).	LC: (Not used)
LAST-SEG-IND	PIC X(01).	LC: (Not used)
TEXT-BLOCKS-COUNT	PIC 9(02).	LC/RC: Number of blocks
NETWORK-SESSION-IND	PIC X(01).	LC: (Not used)
TEST-PROD-IND	PIC X(01).	LC: (Not used)
TRANSMIT-MODE	PIC X(01).	LC: (Not used)
ERROR-CODE	PIC X(01).	LC: (Not used)
TRANS-ORIGINATOR	PIC X(07).	LC: (Not used)
NETWORK-STATUS	PIC X(02).	LC: (Not used)
APPL-STATUS	PIC X(01).	LC: (Not used)
FILLER	PIC X(05).	
MESSAGE-EXCHANGE-CONTROL.	BLOCK (02/3)	
BLOCK-TYPE	PIC X(02).	LC/RC: "02"
BLOCK-SUBTYPE	PIC X(01).	LC/RC: "3"
BLOCK-LINENUM	PIC 9(02).	LC/RC: "01"
MSG-LOCATOR-HEADER	PIC X(26).	LC/RC: ELT_TRANSACTION_SEQ_NO & Title no
PROC-STATUS	PIC X(02).	LC: (Not used)
MSG-MATCH-CNT	PIC X(02).	LC: (Not used)
MSG-MATCH-IND	PIC X(01).	LC: (Not used)
MATCH-LIMIT-EXCEEDED	PIC X(01).	LC: (Not used)
MSG-MATCH-SEQUENCE-ID	PIC X(02).	LC: (Not used)
JURISDICTION-CODE	PIC X(02).	LC: (Not used)
CHNG-STATE-TITLE	PIC X(01).	LC: (Not used)
CLEARI-TRANS-IND	NG PIC X(01).	LC: (Not used)
RDF-IND	PIC X(01).	LC: (Not used)
ACCEPTANCE-IND	PIC X(01).	LC: (Not used)
FILLER	PIC X(02).	LC: (Not used)
BATCH-NO	PIC X(15).	LC: Batch no from LC record
SW-VERSION-MODE	PIC X(01).	LC: (Not used)
FILLER	PIC X(01).	LC: (Not used)
EXPECT-MSG-ADJUSTMENT	PIC X(02).	LC: (Not used)
RESPONSE STATISTIC	BLOCK (23/C)	

BLOCK.		
BLOCK-TYPE	PIC X(02)	RC: "23"
BLOCK-SUBTYPE	PIC X(01).	RC: "C"
BLOCK-LINENUM	PIC 9(02).	RC: "01"
NO-RECEIVED	PIC X(09).	RC: Number records received by lender
NO-ERROR	PIC X(09).	RC: Number records with error(s). (Must match the number of LC transactions returned with errors.
NO-PROCESSED-SUCCESS	PIC X(09).	RC: Number records processed OK.
NO-SENT	PIC X(09).	RC: (Not used)
RESERVED	PIC X(25).	